

# TECHNICAL DATA SHEET MODEL L707

## FICHE TECHNIQUE MODÈLE L707



**AMBIANCE**®  
FIREPLACES | BBQ | OUTDOORS | SPAS

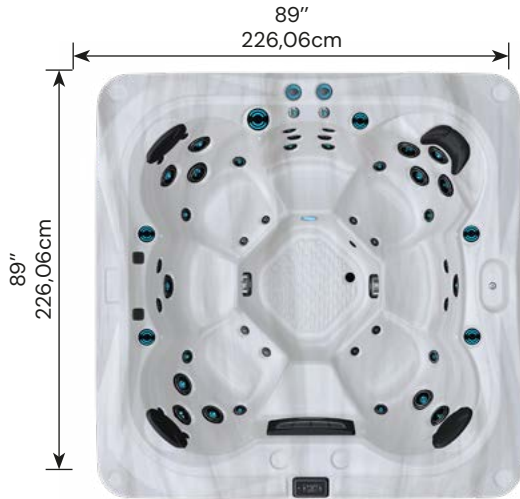
**WEIGHT :** 4 130 lb Full, 935 lb Empty  
(POIDS) 1 873 kg Rempli, 424 kg Vide

**VOLUME :** 383 gal  
1 450 litres

**DIMENSIONS :** 89"x89"x36"  
226 x 226 x 91

### TOP VIEW VUE DU DESSUS

TOLÉRANCE ± 0.5" ( 1,27 cm )



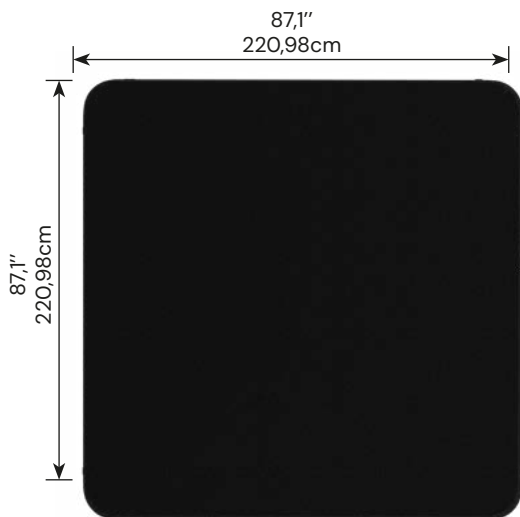
### FRONT / BACK VIEW VU AVANT / ARRIÈRE

TOLÉRANCE ± 0.5" ( 1,27 cm )



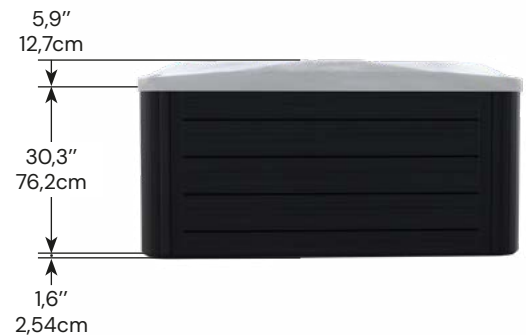
### BOTTOM VIEW VUE DU DESSOUS

TOLÉRANCE ± 0.5" ( 1,27 cm )



### SIDE VIEW VUE DE CÔTÉ

TOLÉRANCE ± 0.5" ( 1,27 cm )



**IMPORTANT! Always measure each hot tub for exact dimensions BEFORE designing its foundational support and/or decking.**

IMPORTANT! Mesurez toujours les dimensions exactes de chaque spa AVANT de concevoir son support de fondation et/ou sa terrasse.



**DIMENSIONS/SPECIFICATIONS SUBJECT TO CHANGE WITHOUT NOTICE.**

**TOLERANCE ± 0.5" ( 1,27CM )**

DIMENSIONS/SPÉCIFICATIONS SUJETTES À CHANGEMENT SANS PRÉAVIS. TOLÉRANCE ± 0,5" ( 1,27 CM )

# TECHNICAL JET CONTROL L707

## FICHE CONTRÔLE DES JETS L707

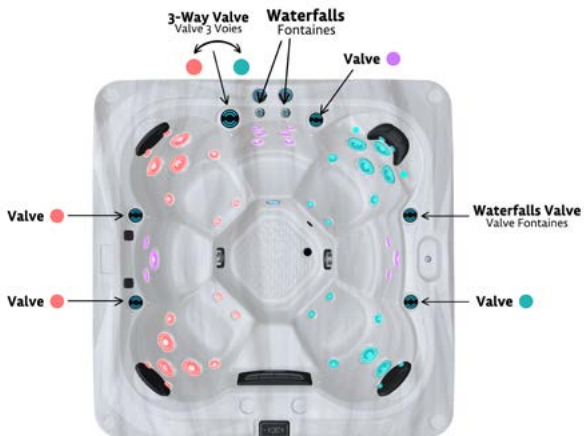
**JETS : 51**



### WATER & AIR JETS JETS D'EAU & AIR

- **11**  **2" DIRECTIONAL**  
2" DIRECTIONNEL
- **8**  **2" ROTATIONAL**  
2" ROTATIONNEL
- **12**  **3" DIRECTIONAL**  
3" DIRECTIONNEL
- **6**  **3" ROTATIONAL**  
3" ROTATIONNEL
- **9**  **5" DIRECTIONAL**  
5" DIRECTIONNEL
- **5**  **5" ROTATIONAL**  
5" ROTATIONNEL

### VALVE CONTROL CONTRÔLE DES VALVES



**PUMP - 2 SPEEDS**  
POMPE - 2 VITESSES



**PUMP - 1 SPEED**  
POMPE - 1 VITESSE



# ELECTRICAL CONNECTION L707

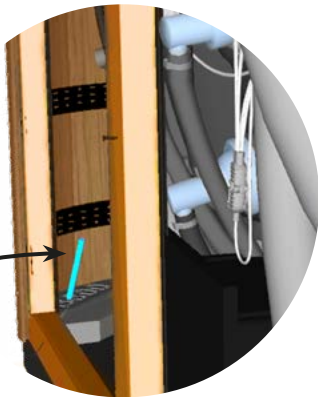
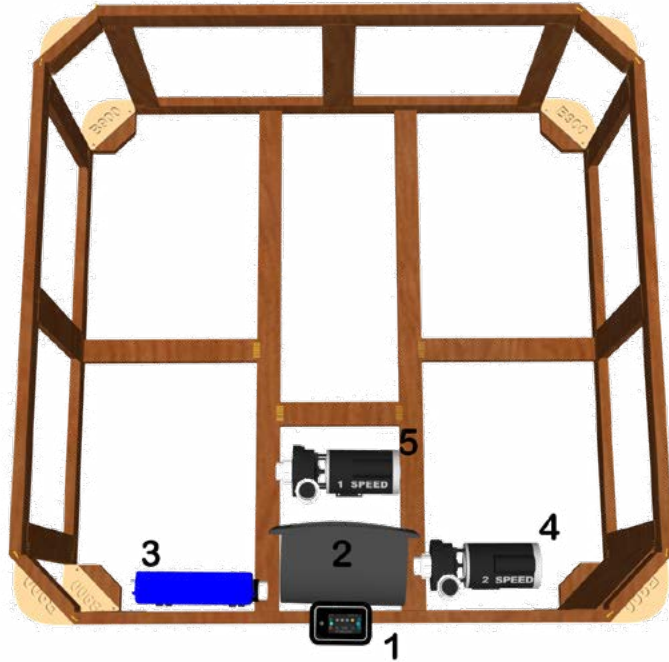
## BRANCHEMENT ÉLECTRIQUE L707



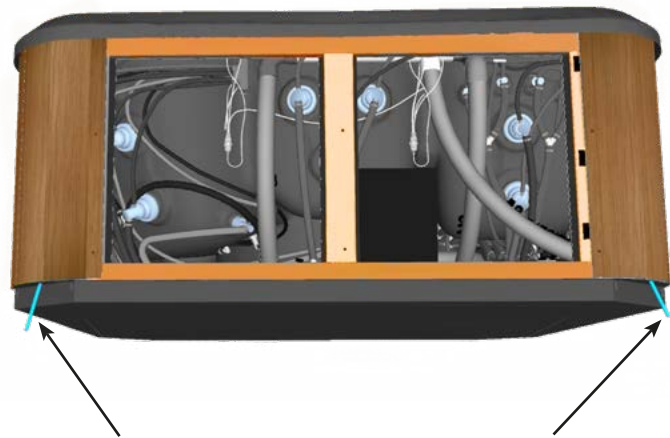
### CAPTION

#### LÉGENDE

1. TouchScreen Keypad  
Écran Tactile
2. Skimmer  
Écumoire
3. Pack Gecko Ye3
4. Pump 2 Speed  
Pompe bi-vitesse
5. Pump Single Speed  
Pompe mono-vitesse



Drill in the corner from inside to outside  
Percer en angle de l'intérieur vers l'extérieur



One way or the other  
D'un côté ou de l'autre