

TECHNICAL DATA SHEET MODEL L523

FICHE TECHNIQUE MODÈLE L523

WEIGHT : 3 941 lb Full, 935 lb Empty
(POIDS) 1 788 kg Rempli, 424 kg Vide

VOLUME : 359 gal
1 360 litres

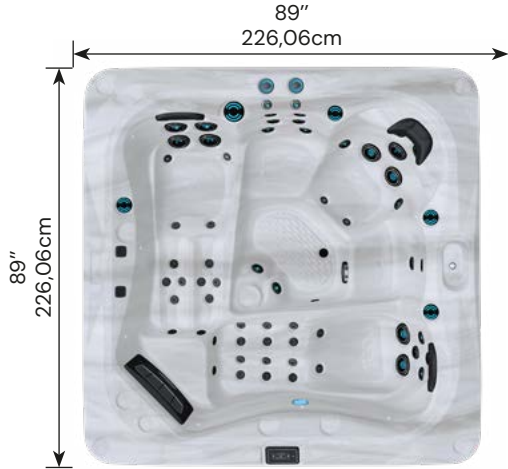
DIMENSIONS : 89"x89"x36"
226 x 226 x 91



AMBIANCE[®]
FIREPLACES | BBQ | OUTDOORS | SPAS

TOP VIEW VUE DU DESSUS

TOLÉRANCE ± 0.5" (1,27 cm)



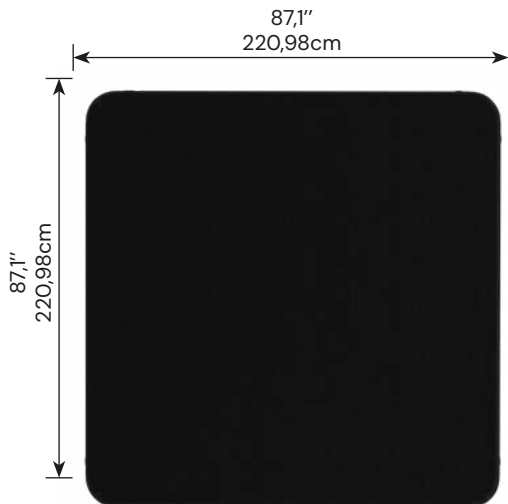
FRONT / BACK VIEW VU AVANT / ARRIÈRE

TOLÉRANCE ± 0.5" (1,27 cm)



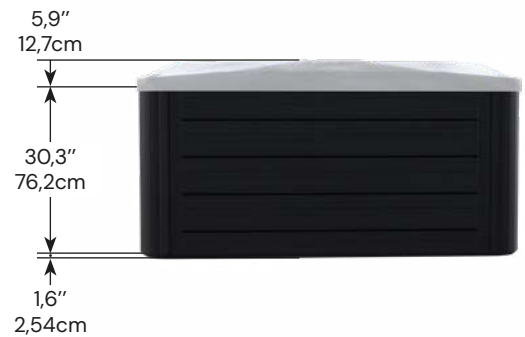
BOTTOM VIEW VUE DU DESSOUS

TOLÉRANCE ± 0.5" (1,27 cm)



SIDE VIEW VUE DE CÔTÉ

TOLÉRANCE ± 0.5" (1,27 cm)



IMPORTANT! Always measure each hot tub for exact dimensions BEFORE designing its foundational support and/or decking.

IMPORTANT! Mesurez toujours les dimensions exactes de chaque spa AVANT de concevoir son support de fondation et/ou sa terrasse.



DIMENSIONS/SPECIFICATIONS SUBJECT TO CHANGE WITHOUT NOTICE.

TOLERANCE ± 0.5" (1,27CM)

DIMENSIONS/SPECIFICATIONS SUJETTES À CHANGEMENT SANS PRÉAVIS. TOLÉRANCE ± 0,5" (1,27 CM)

TECHNICAL JET CONTROL L523

FICHE CONTRÔLE DES JETS L523

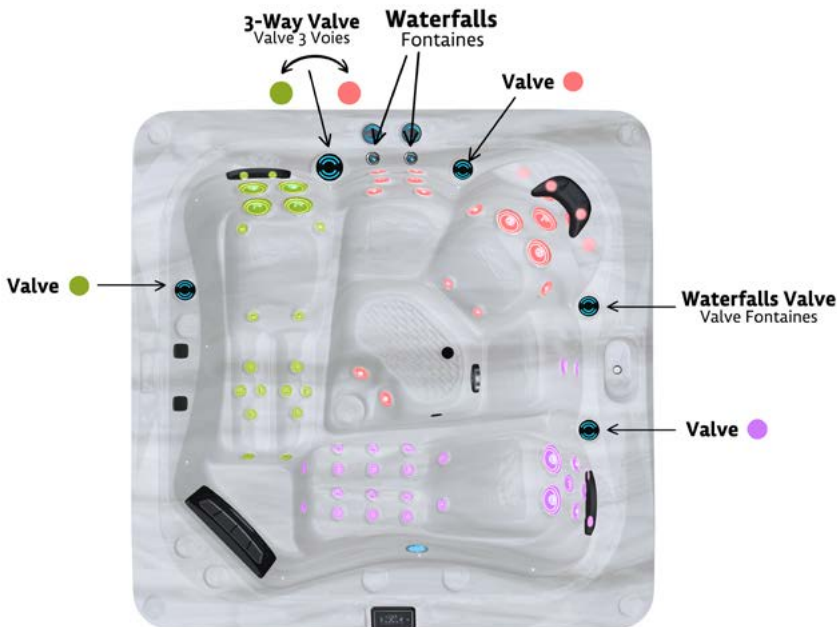
JETS : 68



WATER & AIR JETS JETS D'EAU & AIR

- 35 2" DIRECTIONAL
2" DIRECTIONNEL
- 4 2" ROTATIONAL
2" ROTATIONNEL
- 12 3" DIRECTIONAL
3" DIRECTIONNEL
- 6 3" ROTATIONAL
3" ROTATIONNEL
- 8 5" DIRECTIONAL
5" DIRECTIONNEL
- 3 5" ROTATIONAL
5" ROTATIONNEL

VALVE CONTROL CONTRÔLE DES VALVES



- PUMP - 2 SPEEDS
POMPE - 2 VITESSES ● ●
- PUMP - 1 SPEED
POMPE - 1 VITESSE ●

ELECTRICAL CONNECTION L523

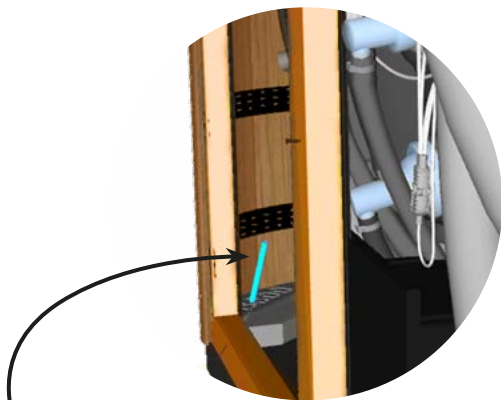
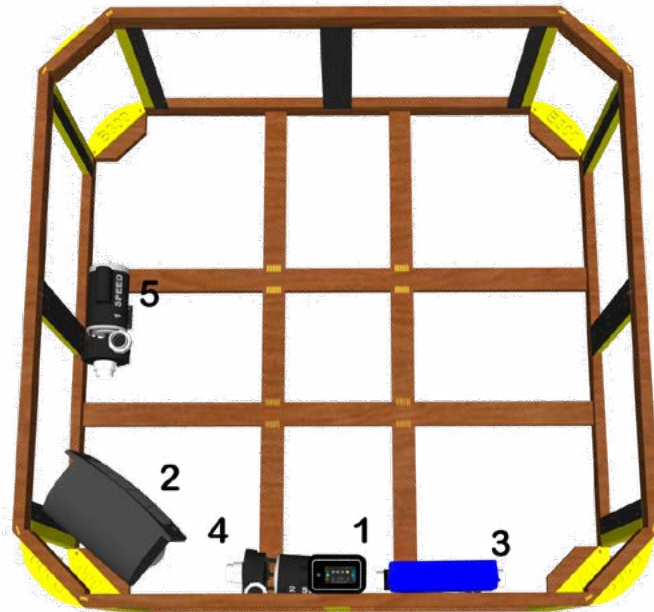
BRANCHEMENT ÉLECTRIQUE L523



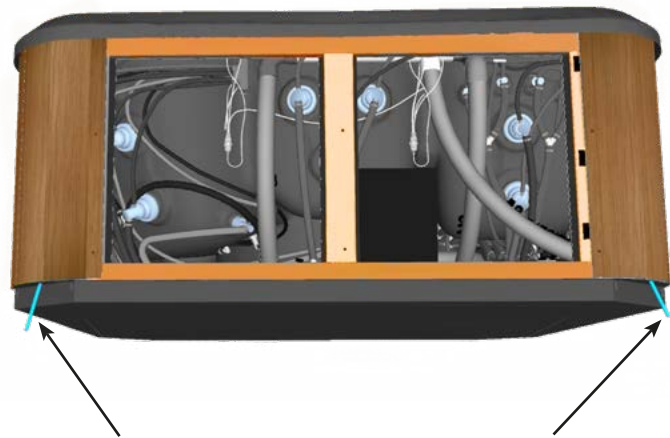
CAPTION

LÉGENDE

1. TouchScreen Keypad
Écran Tactile
2. Skimmer
Écumoire
3. Pack Gecko Ye3
4. Pump 2 Speed
Pompe bi-vitesse
5. Pump Single Speed
Pompe mono-vitesse



Drill in the corner from inside to outside
Percer en angle de l'intérieur vers l'extérieur



One way or the other
D'un côté ou de l'autre